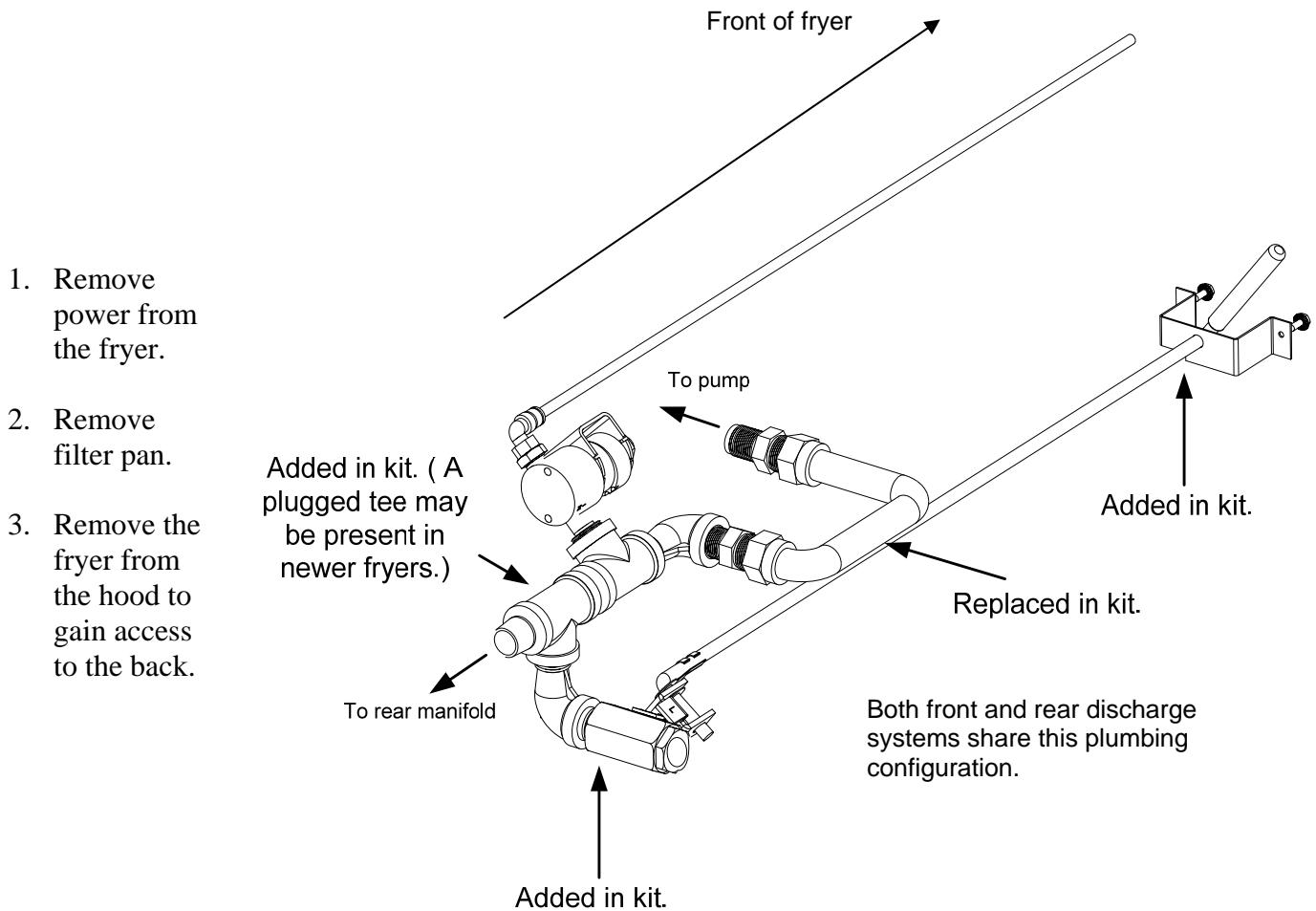


# FPRE/FMRE Oil Disposal Kit, Front or Rear

For Kits: 826-2271, 826-2272, 826-2273

This kit adds a rear-mounted valve in the oil-return plumbing, directing the oil flow away from the rear return to either a front or rear-oil discharge quick-disconnect. The rear discharge is used to dispose of oil in a hard-plumbed oil disposal system. The front discharge pumps oil through a hose and wand.

Follow these instructions to install an oil disposal kit on a FPRE or FMRE.



**Figure 1**

4. Remove the lower back to gain access to the rear-return plumbing.
5. Check for the presence of a tee in the oil return line between the vent solenoid and the square drain manifold. See figures 1 and 2.

6. If no tee is present in the oil return line between the square rear manifold and the vent solenoid, a tee must be installed, which requires the removal of the solenoid and its tee.
7. Push the two solenoid-wires out of the six-pin connector, allowing the solenoid to be removed without damage to the wiring.
8. Remove the solenoid vent tube by pushing in on the locking collar. See figure 2.
9. Remove the flexline between the pump and the solenoid tee.
10. It may be necessary to remove the left upper 1/4 x20 bolt supporting the pump to create enough space to spin the solenoid and its tee.
11. Remove the solenoid and the tee attaching it to the return manifold.
12. Install the provided tee with the provided close nipples.
13. Reinstall the solenoid and reattach the vent tube and replace the solenoid wires in the six-pin plug.
14. Reinstall the provided flex line between the solenoid and the pump.
15. Install the street elbow (shown in figure 2) and the valve.
16. Connect the activation rod to the new valve and route the rod to the front of the fryer cabinet. Ensure the rod joins the valve on a flat plane. Off-angle attachment can cause operational problems.
17. Install the brace for the activation rod in the cross brace at the front of the fryer cabinet. Use existing holes to mount the brace. See figure 4.



**Figure 2:** This tee (see arrow) may be present and plugged in newer fryers.



**Figure 3:** Release the solenoid vent tube by depressing the collar on the coupling.



**Figure 4:** The rod is shown just under the drain manifold. The brace is fastened to the cross brace using existing holes.

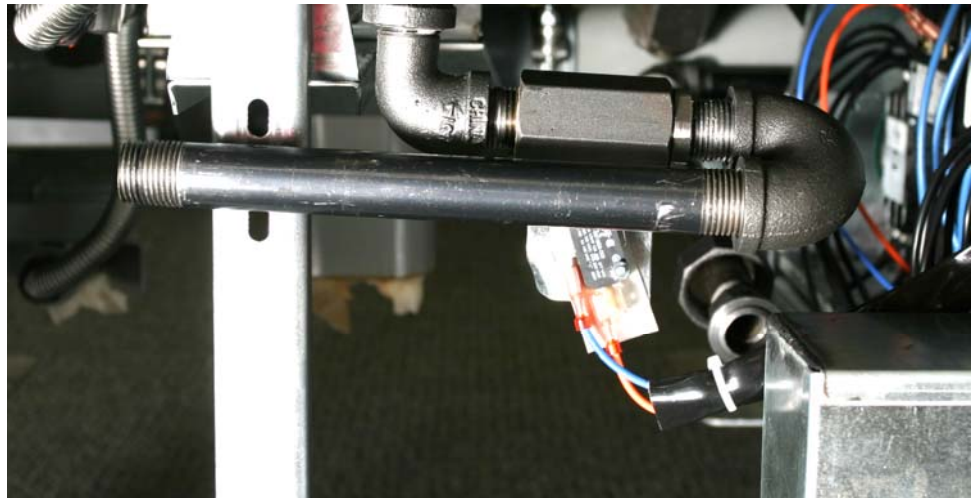
**Follow these instructions for rear disposal. If front discharge, skip to front discharge instructions.**

1. Install the brace for the U-bolt plumbing bracket in the rear vertical brace of the fryer. See figure 5.

2. Install the close nipple and the 180° elbow to direct the flow of the oil rearward. See figure 6.
3. Install the U-bolt bracket and the quick disconnect. See figure 7.
4. Access the microswitch on the newly installed valve.
5. Route provided wiring harness to left-hand vat return valve microswitch and attach with piggybacks as shown in figure 8. This allows the newly installed valve microswitch to activate the pump.
6. Check for proper operation.



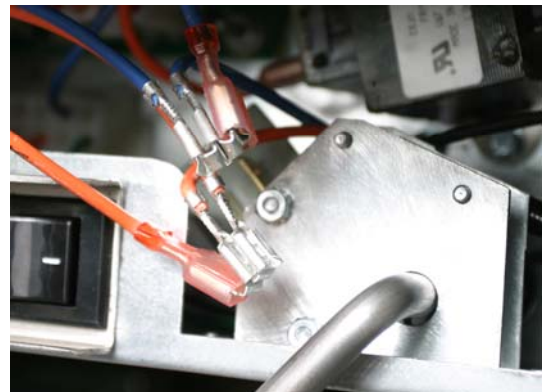
**Figure 5:** The brace for the U-bolt, which supports the rear discharge plumbing should align with these holes in this vertical brace.



**Figure 6:** Install the close nipples and the elbow to route the oil rearward.



**Figure 7:** The plumbing with the brace and the quick disconnect installed is shown above.



**Figure 8:** Attach the wiring harness from the rear valve microswitch to the leftside from oil return microswitch.

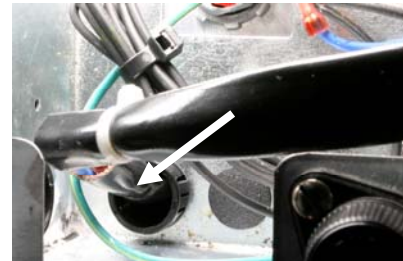




**Figure 9:** The completed plumbing for front disposal is shown. Install the rear section, including the half union, first. Install the front bracket and the rearward junction, leaving the junction loose.

**Follow these instructions for front discharge:**

1. Use the provided nipples, street elbow and union to route the plumbing to the front of the fryer. The completed plumbing is shown in figure 9.
2. Install the plumbing-support bracket (shown in figure 10) and route the other half union rearward.
3. Attach the male quick disconnect.
4. Tighten the union coupling.
5. Install the disposal switch shown in figure 11. Attach the wiring harness from the newly installed valve in the rear to the toggle switch.
6. Piggy back wiring from disposal toggle switch to the left-hand oil return switch. Place the provided grommet in an existing hole in the control box and route the wiring to the switch through the grommet. See figures 8 and 10.
7. To operate the front discharge, attach the wand and hose assembly. Direct the wand into a fryer vat or other suitable vessel. Rotate the newly installed activation rod to the ON position and push up on the momentary switch.
8. Test operation.



**Figure 10:** Place the provided grommet in the existing hole in the control box (see arrow) and route the momentary switch wiring through the grommet to the filter handle microswitch.



**Figure 11:** The momentary switch and the front-discharge quick disconnect are visible in the cabinet.

# Kit BOMs

826-2271, Front Oil Disposal		
Part #	Description	Qty
1066033	VALVE ASSY, RE OIL DISPOSAL	1
2200922	ROD, RE SONIC OIL DISPOSAL	1
2200963	BRACKET, OIL DISPOSAL ROD	1
8090412	SCRW,#10-1/2 HX WSHR HD NP	5
8090601	CLIP, CLEVIS LT.ROD END	1
8100487	QUICK DISCONNECT, 1/2" MALE	1
8130022	NPPL,1/2XCLOSE NPT BM	1
8130062	ELBOW,1/2 90DEG BM	2
8130093	NPPL, 1/2NPT X 4.00 BM	2
8130165	EL,ST 1/2NPT 90DEG BM	2
8130173	UNION,1/2NPT 150# BM	1
8130429	NPPL,1/2NPT X 13.00 BM	1
8160637	CAP,VINYL BLUE 5/16" X 3"	1
8235685	BRACKET W/A, QUICK DISCONNECT	1
8067459SP	OIL DISCD WAND ASSY	1
1065976	SWITCH ASSY,FRONT OIL DISPOSAL	1
8051653	DIAGRAM,WIRING FV/DV OIL DSPSL	1
8196233	DISCHARGE, RE FRNT INSTALL KIT	1
8100045	BUSHING, .875 DIA. HOLE 11/16	1
130986	PLUMBING,RE FRONT OIL DISPOSAL	1

826-2272, Rear Oil Disposal		
Part #	Description	Qty
1066033	VALVE ASSY, RE OIL DISPOSAL	1
2200922	ROD, RE SONIC OIL DISPOSAL	1
2200963	BRACKET, OIL DISPOSAL ROD	1
8090412	SCRW,#10-1/2 HX WSHR HD NP	2
8090601	CLIP, CLEVIS LT.ROD END	1
8100487	QUICK DISCONNECT, 1/2" MALE	1
8130022	NPPL,1/2XCLOSE NPT BM	2
8130165	EL,ST 1/2NPT 90DEG BM	1
8160637	CAP,VINYL BLUE 5/16" X 3"	1
1063531	HOSE ASSY, SONIC OIL DISPOSE	1
1066059	HARNESS,RE OIL RETURN FV/SP/FV	1
8022365	LABEL, RE OIL DISPOSAL	1
8196233	DISCHARGE, RE FRNT INSTALL KIT	1
8090949	U-BOLT, 1/4-20X2 1/4 W/RTNR	1
8130096	NPPL,1/2NPT X 6.00 BM	1
2202120	NPL BRCKT,RE REAR OIL DISPOSAL	1
2202121	SUPPORT,REAR OIL DSPOSL BRCKT	1
8100045	BUSHING, .875 DIA. HOLE 11/16	1
130985	PLUMBING,RE REAR OIL DISPOSAL	1
8090071	NUT,1/4-20 HX ZP	2

826-2273, Marine RE Front Disposal		
Part #	Description	Qty
1065974	VALVE ASSY, OIL DISPOSAL RCCL	1
2300985	ROD, RCCL FRONT OIL DISPOSAL	1
2300986	BRACKET, RCCL OIL DISPOSAL ROD	1
8090500	SCRW,#10X1/2 HX WSHR HD SS	5
8090601	CLIP, CLEVIS LT.ROD END	1
8100487	QUICK DISCONNECT, 1/2" MALE	1
8130900	NIPPLE, 1/2 X CLOSE NPT S/S	1
8130889	ELBOW, 1/2 90 DEG SS	2
8130901	NIPPLE, 1/2 X 4 NPT S/S	2
8130616	ELBOW,SS STR,1/2X90 DEG.	2
8130902	UNION, 1/2 IN. NPT S/S	1
8130904	NIPPLE, 1/2 X 13 NPT S/S PIPE	1
8160637	CAP,VINYL BLUE 5/16" X 3"	1
8235693	BRKT W/A,QUICK DISCONNECT RCCL	1
8067459SP	OIL DISCD WAND ASSY	1
1065976	SWITCH ASSY,FRONT OIL DISPOSAL	1
8051653	DIAGRAM,WIRING FV/DV OIL DSPSL	1
8196233	DISCHARGE, RE FRNT INSTALL KIT	1
8100045	BUSHING, .875 DIA. HOLE 11/16	1